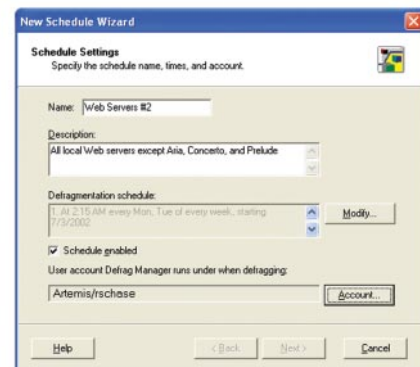
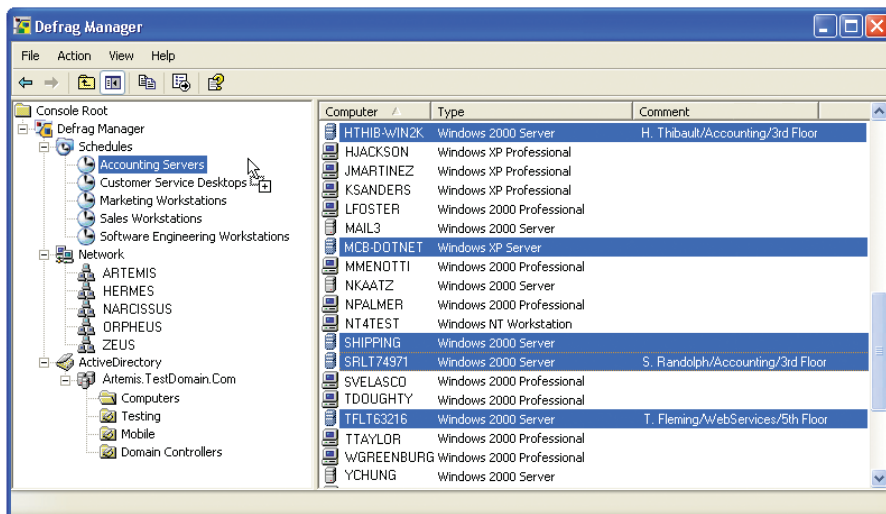


Improve system performance throughout your enterprise.

Defrag Manager™ combines the speed and power of the SmartPhase™ defragmentation engine with exceptional ease of use.



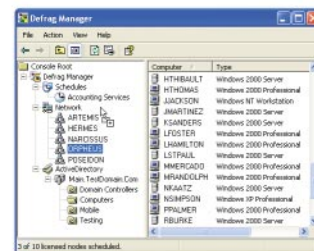
Getting started with Defrag Manager is easy with the New Schedule Wizard, which guides you through each step of creating and configuring customized schedules.

From a single installation on one machine, Defrag Manager allows administrators to defragment the drives of Windows Server 2003®, Windows XP®, Windows 2000® and Windows NT® 4.0 systems via the network with no need for client software installations.

Defrag Manager deploys the SmartPhase defragmentation engine to each system according to schedules the administrator defines. The engine performs defragmentation and free-space consolidation, then removes itself.

Advanced features make it easy to schedule systems, Active Directory Organizational Units, and entire NetBIOS and AD domains with a single drag-and-drop. Real-time views of systems and schedules give you network-wide status at-a-glance.

No other defragmenter offers a lower total cost of ownership or a faster return on investment.



You can add entire domains to existing schedules simply by selecting the domain and dragging it onto the desired schedule node.

The Defrag Manager Advantage

ADVANCED TECHNOLOGY

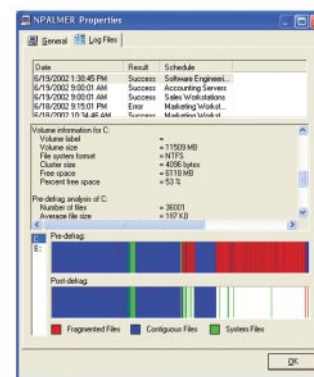
You'll optimize disk performance throughout your enterprise with Defrag Manager's SmartPhase engine, the most sophisticated defragmentation algorithm on the market.

ZERO CLIENT INSTALLATION

With Defrag Manager, you'll be able to boost performance on all networked systems without ever leaving your desk and without time-consuming end-user interactions.

EASE OF USE

You'll have access to Wizards to guide you through all key steps of creating and configuring custom defragmentation schedules. Adding systems to established schedules will be as easy as drag and drop.









You can view results of a schedule's execution, or the results of individual computer defrags, including pre- and post-defragmentation graphical displays.

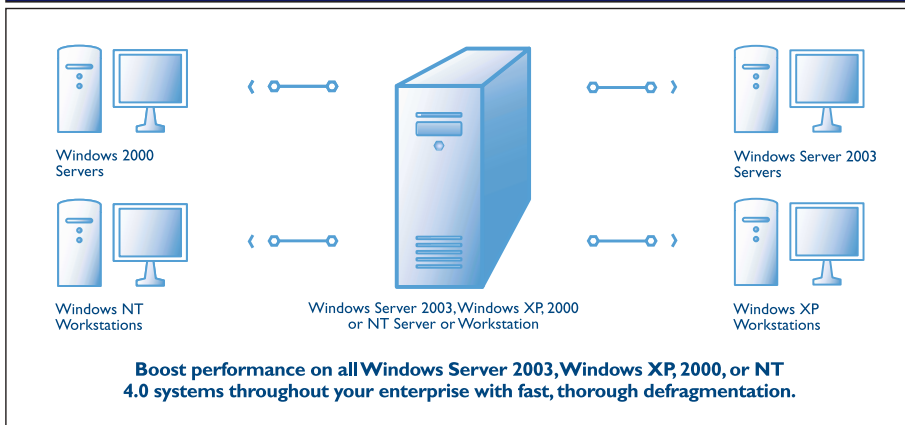
"I only had to install Defrag Manager on my local system in order to defrag my entire network. It lets me manage defragmentation for every Windows client in my network from my own PC, which significantly reduces the service calls from end-users that I encountered with other network defragmentation products."

Rich G. De Lyons Jr. • IT Manager • Beta Steel Corp.

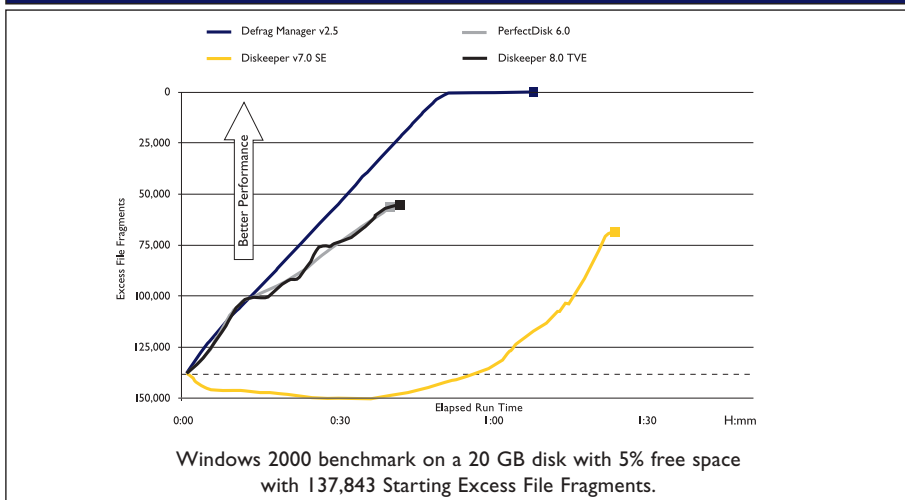
SCHEDULES AND REPORTS

Create New Schedule Wizard-based creation of custom schedules.	
Configuring Schedules Specify settings for existing schedules, including defragmentation priority, defrag client persistence, defrag time limit, and non-default administrative share names.	
Exclusion Configurations Specify files, directories, extensions, and volumes that will be excluded from defragmentation.	
Log File Configurations Enable logging, specify a log file directory, and configure Defrag Manager to save the most recent log file in a specified directory.	
Defrag on Demand Initiate an unscheduled defragmentation of all systems within the selected schedule.	
Analyze System Initiate an unscheduled defragmentation analysis of all systems within the selected schedule.	

ENTERPRISE DEFRAGMENTATION



EXCESS FILE FRAGMENTS



REQUIREMENTS

Defrag Manager requires Windows Server 2003, Windows XP, Windows 2000, or Windows NT 4.0. Use with Windows NT 4.0 also requires the Microsoft Task Scheduler (included with the off-line browsing package for Internet Explorer® 5.0 or higher). Computers included in defragmentation schedules can be running Windows Server 2003, Windows XP, Windows 2000, or Windows NT 4.0.

Microsoft®
GOLD CERTIFIED
Partner

Winternals®

3101 Bee Caves Road

Suite 150

Austin, TX 78746

www.winternals.com

Ph 512.330.9130

Fax 512.330.9131